



SIMPLY UPLIFTING™

542 3Rd Street, Lake Elsinore, CA 92530

TEL: 951-245-8669, FAX: 951-245-5481



**CADILLAC CTS
2003-2007**

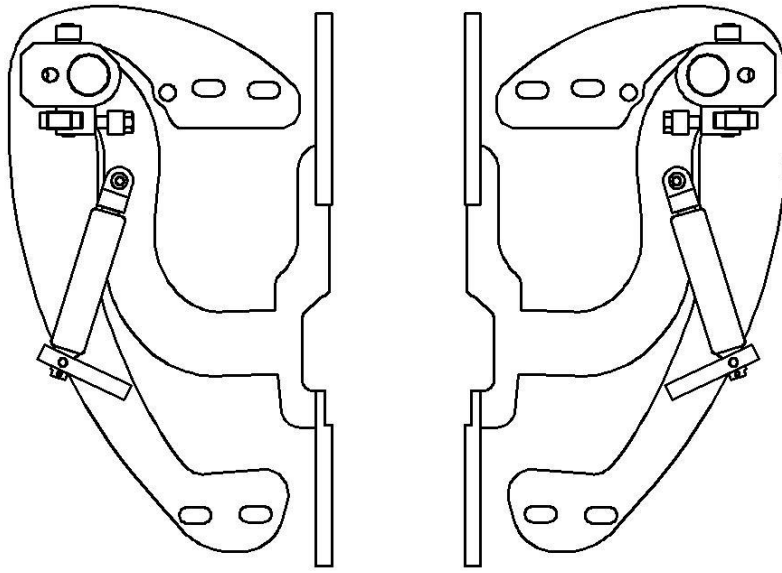
U.S. PATENTS

#6,808,223; #6,845,547; #7,140,075; #7,059,655

PATENTS AGGRESSIVELY ENFORCED!

**PLEASE CAREFULLY READ ALL INSTRUCTIONS BEFORE
ATTEMPTING TO INSTALL THIS PRODUCT.**

**FOR QUESTIONS PLEASE
CONTACT US AT (951) 245-8669**



THIS KIT INCLUDES:

➤ 16 M8-1.25X30MM BOLTS WITH WASHERS	➤ RIGHT AND LEFT HINGE ASSEMBLY
➤ 2 SHOCKS 720 PSI	➤ 2 SHOULDER BOLTS
➤ 2 PINS	➤ 2 WIRES AND 4 WIRE CONNECTORS

TOOLS REQUIRED FOR INSTALLATION:

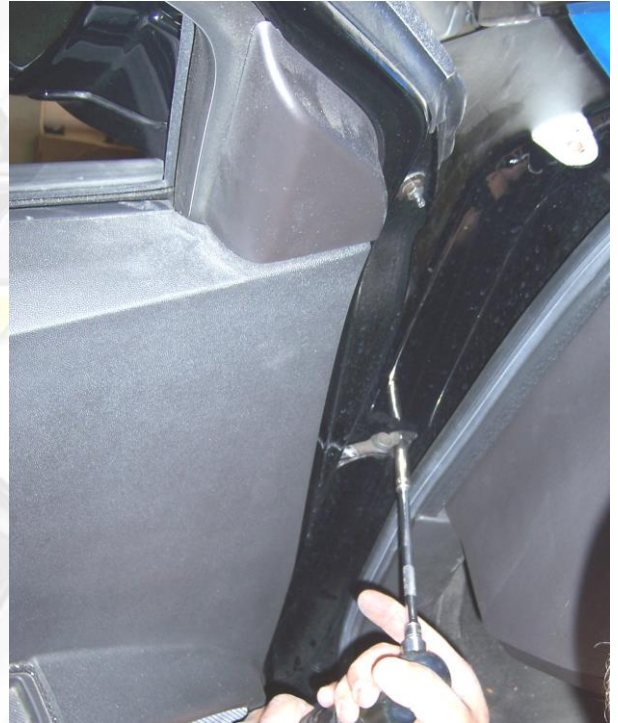
	➤ AIR RACHET, GRINDER AND CUTTER.
	➤ 10MM, 11MM, 13MM, 14MM, 15MM, SOCKETS AND EXTENSION.
	➤ FORK AND PHILLIP'S SCREW DRIVERS
	➤ SPACERS FOR THE DOOR GAP.
	➤ 3/16 ALLEN WRENCH
	➤ 1/4 TORX BIT
	➤ 9/16 WRENCH
	➤ LOCKTITE RED

OTHER TOOLS MAY BE NEEDED DEPENDING ON YOUR VEHICLE.

(Note: The pictures on the manual are for reference only they may not match your vehicle.)

1) Disconnect the battery.

2) Remove the door catch:
Open door completely and remove the fasteners securing the door catch. Later on, we'll take the door panel off and remove the door catch.



3) Remove the fender:



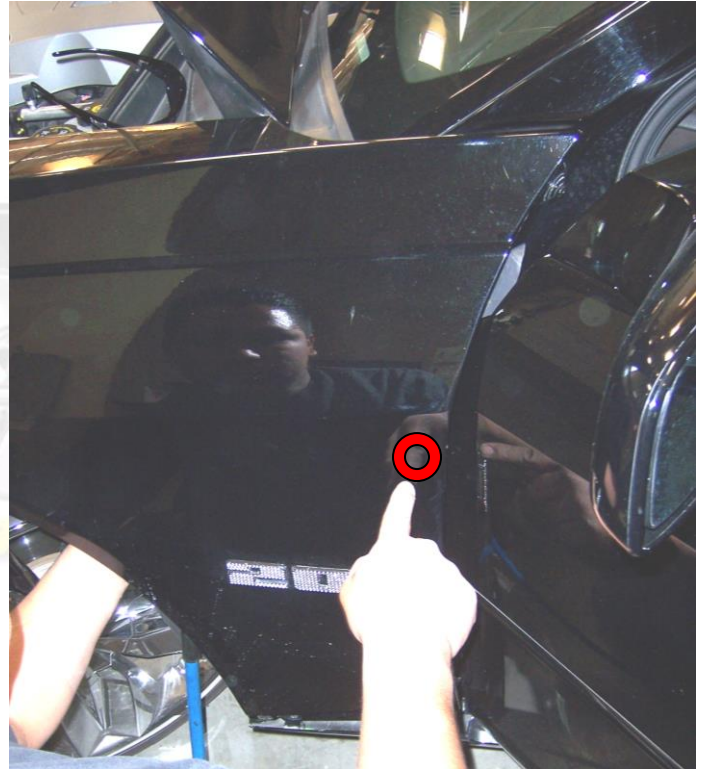
Remove all fasteners on wheel well.

Remove the first (3) fasteners from the skirt to gain access to (2) 10mm bolts securing the fender to the body.

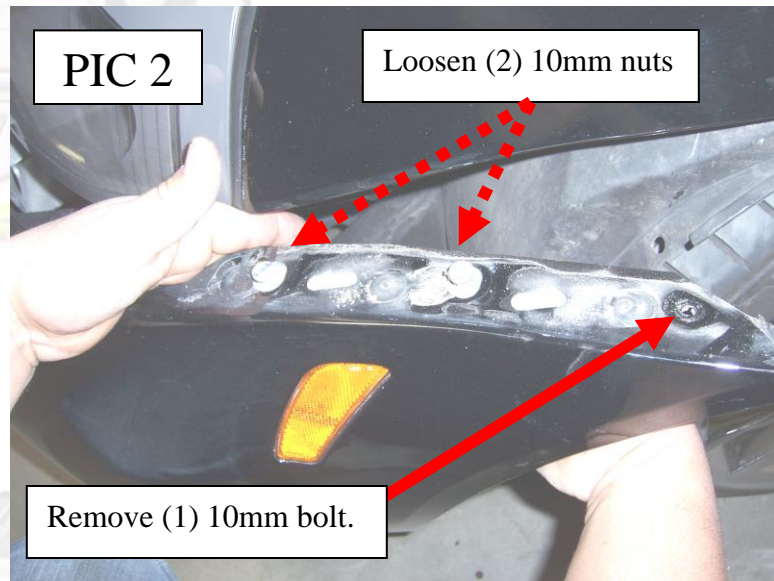
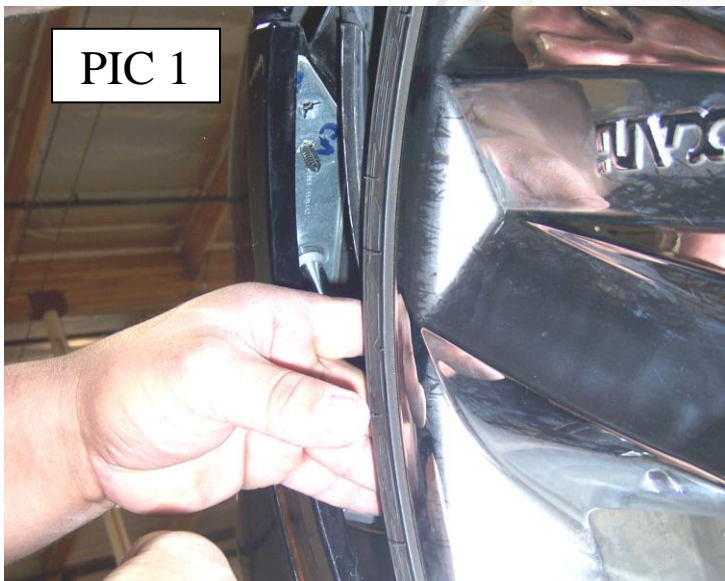


Open the door and remove (1) 10mm bolt from the top, between the door and the windshield pillar.

Once fasteners have been removed from the wheel well, use an extension on the ratchet to remove (1) 10mm bolts located by the factory hinges.



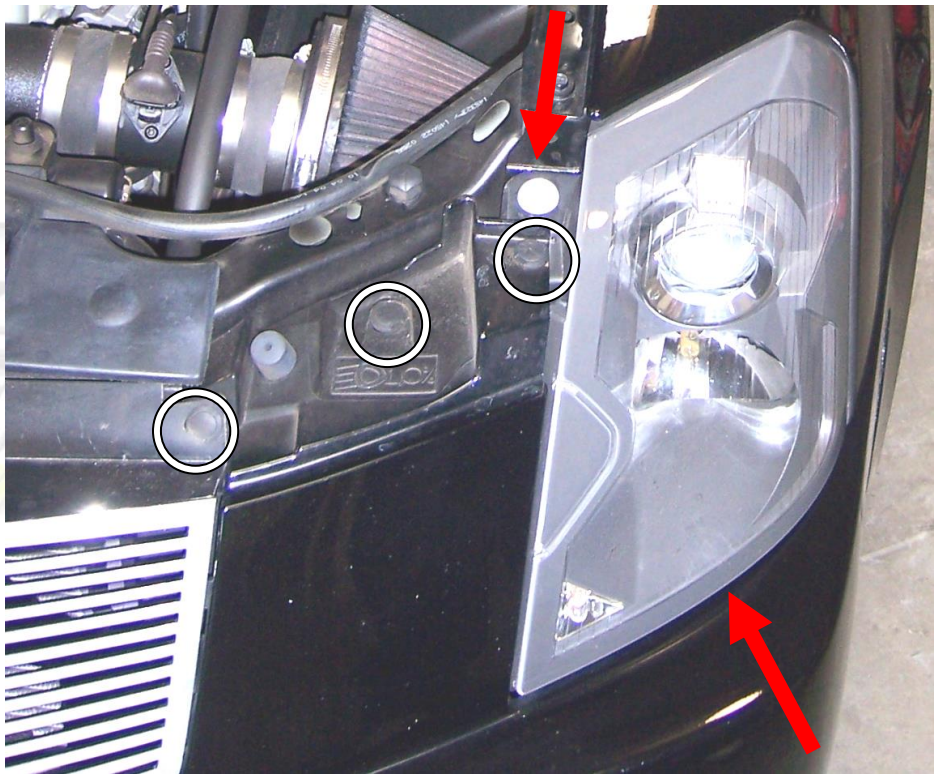
Pull on the wheel well (by front bumper), and remove (1) 10mm bolt and loosen (2) 10mm nuts; note you will need a long socket to loosen the nuts.



Pull on the bumper towards the front of the vehicle, then pull down to expose the 2, 10mm bolts that attach the fender to body and the one 10mm nut that attaches it to the headlight.

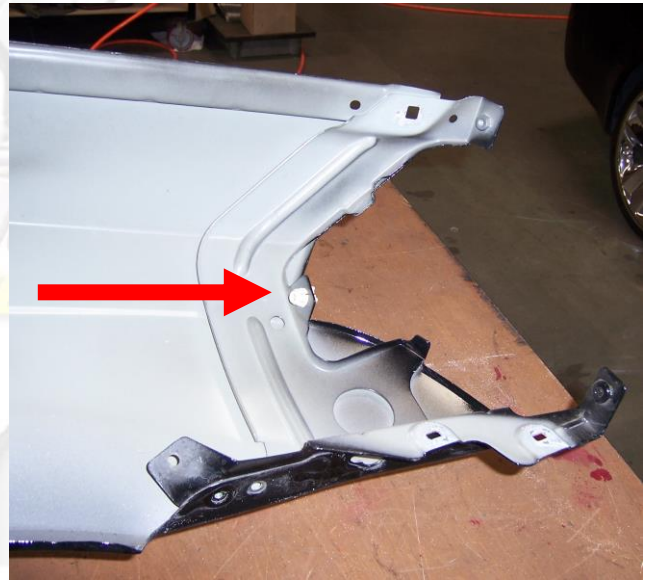


To remove the fender you will have to remove the bumper. To remove the bumper use the fork to take off (3) plastic clips (circles) and use a 10mm socket to remove (1) bolt (arrow) securing the headlight to fender.



After you have removed the bumper take off the bolts on top of the fender, at this point you will be ready to remove the fender.

Note: there is a plastic clip between the headlight and the fender you will have to pull on the fender toward the back of the car.



4) Remove door panel: Remove the plastic covers and the fasteners securing the door panel. Note: Use the fork to pry the control panel, and disconnect the wire harnesses.

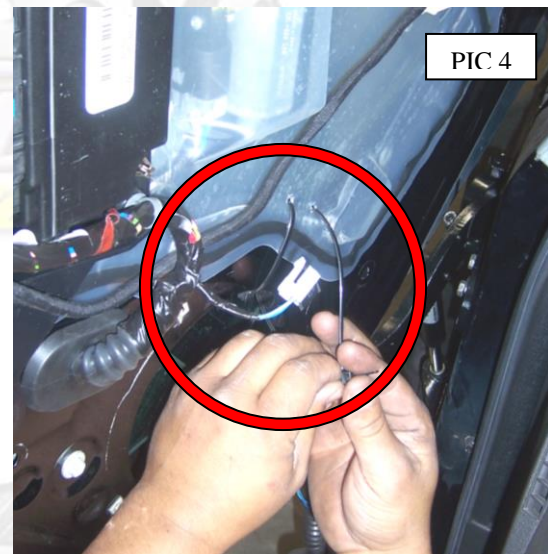
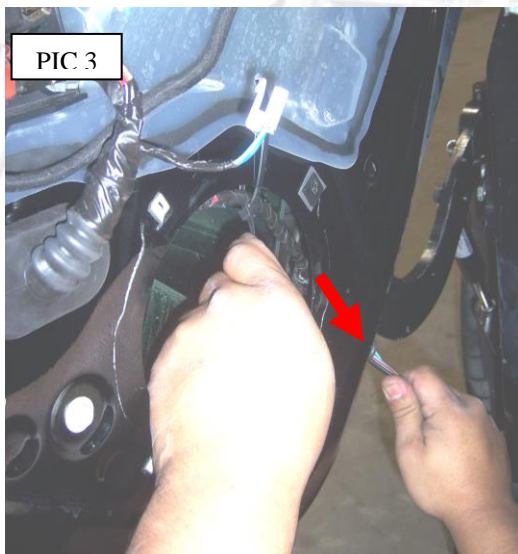
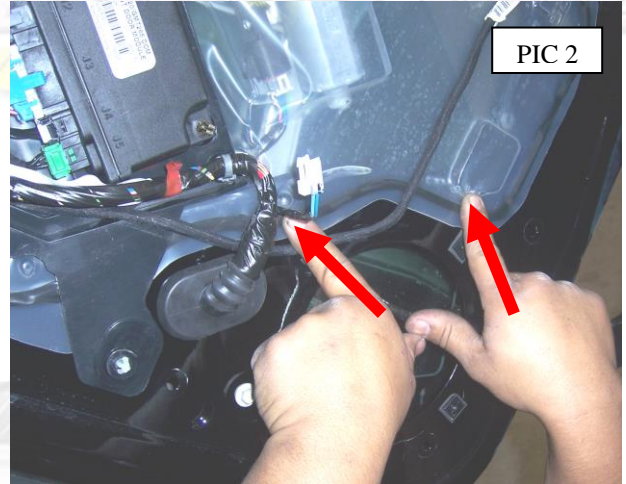
Be careful when removing the panel disconnect the light at the bottom of the door.

After removing the door panel you will be able to remove the door catch by removing the speaker.



5) How to gain extra wire slack:

After removing the speaker use a sharp knife (Pic. 1) to strip the wire loom from the wires this will allow you to pull on the wires. Remove the (2) plastic clips that hold the wires down (Pic. 2), after removing the interior wire loom you will be able to pull on the wires to gain the extra wire slack needed (Pic. 3). To ensure the wires don't get pinch on the power windows mechanism use zip ties to secure the wires to the door (Pic. 4).



6) Preparation for factory hinge removal:

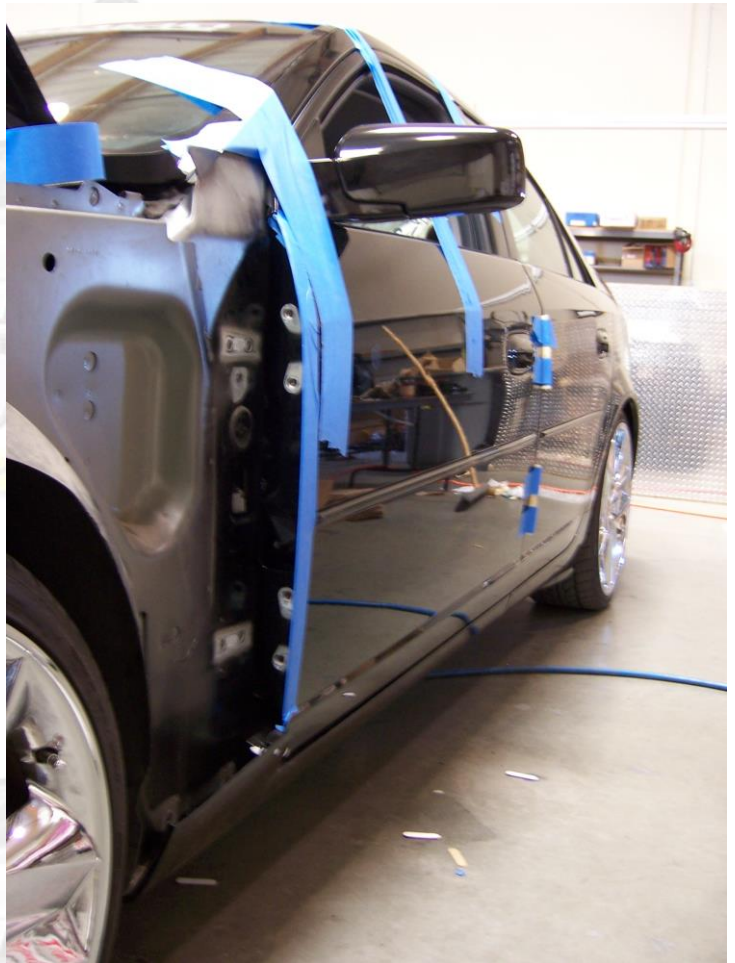
Close the door and use painter's tape to secure the door to the body, in preparation for factory hinge removal.

Use a 13mm wrench to remove the (4) bolts securing the factory hinges.

Insert spacers after removing the factory hinges.

Hint(You can make your spacers out of paint sticks and about 8-10 turns of blue painters' tape)*

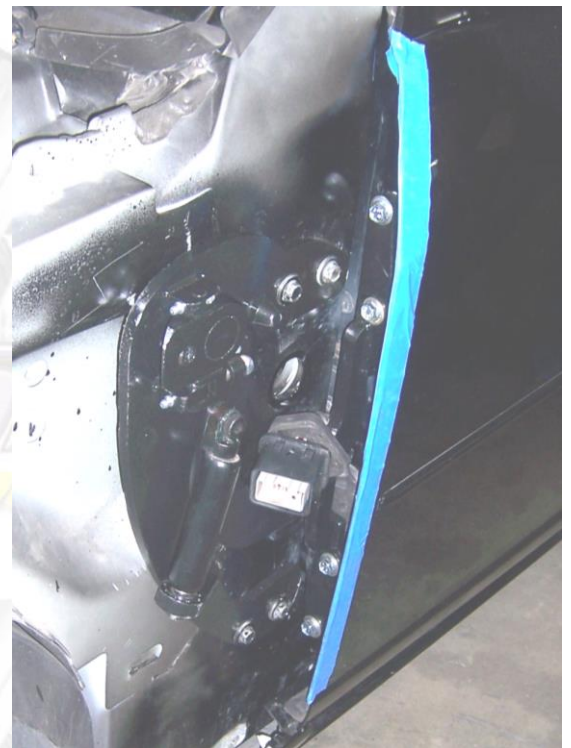
Hint Use painter's tape to protect the edges of the fenders and the doors.*

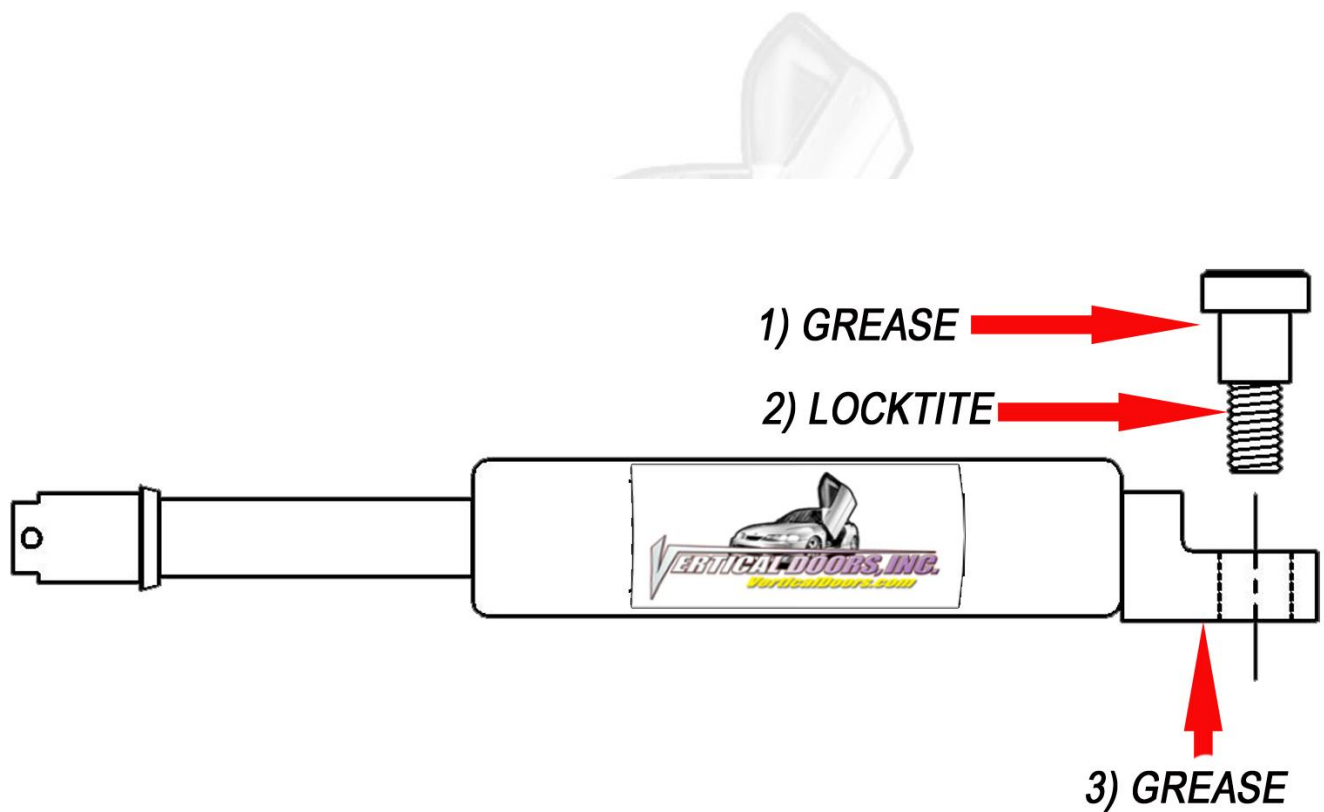


7) Install your new Vertical Doors Inc. system:

Make sure the new VDI system sits flat against the apron.

Hint Tighten the bolts on the door first then the bolts on the apron.*



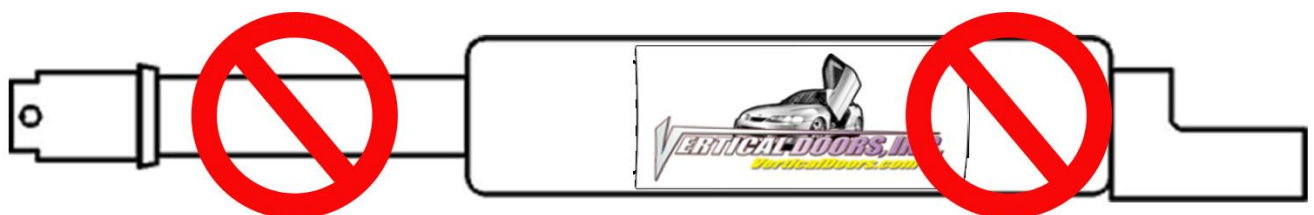


***IMPORTANT STEP: DO NOT SKIP THIS STEP. THIS STEP IS CRUCIAL IN YOUR INSTALLATION PROCESS, IF THIS STEP IS NOT COMPLETED WHEN INSTALLING THE VERTICAL DOOR KIT; ALL WARRANTIES ARE VOIDED, AND MAY CAUSE FUTURE PROBLEMS WITH YOUR VERTICAL DOOR SYSTEM.**

1ST, make sure you put grease on the body of shoulder bolt where the arrow is pointing.

2ND, make sure you put red Locktite, where the arrow is pointing, on thread of shoulder bolt.

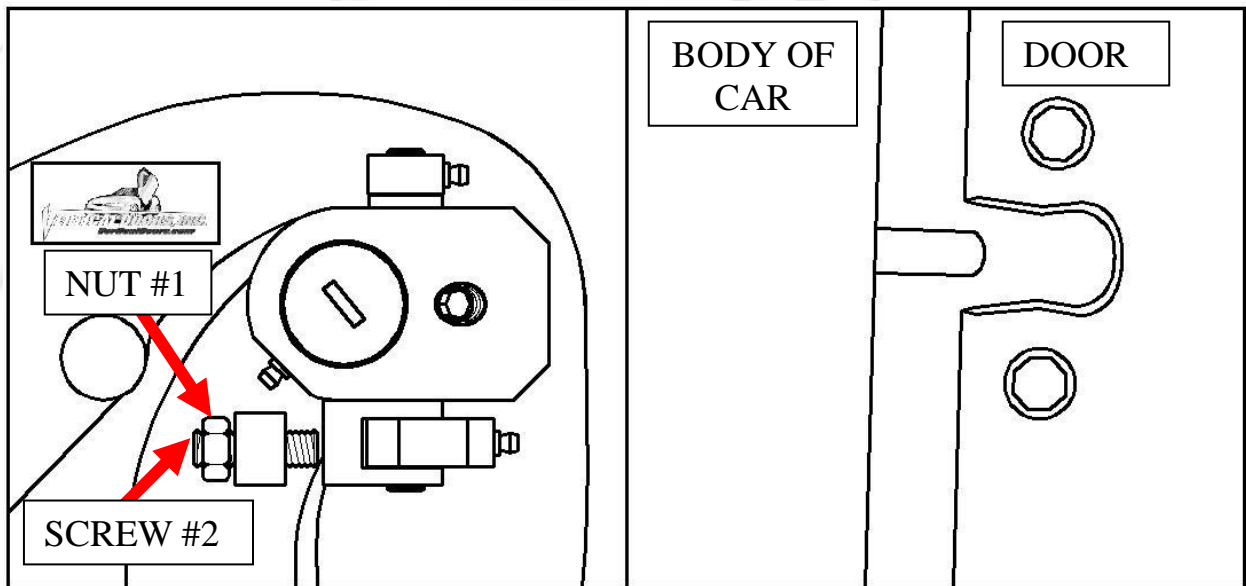
3RD, make sure you put grease on the bottom side of the shock end.



WARNING! THE USE OF ANY TYPE PLYERS, PAINT OR FOREING MATERIALS ON THE SHOCK'S BODY OR SHAFT WILL VOID THE WARRANTY.

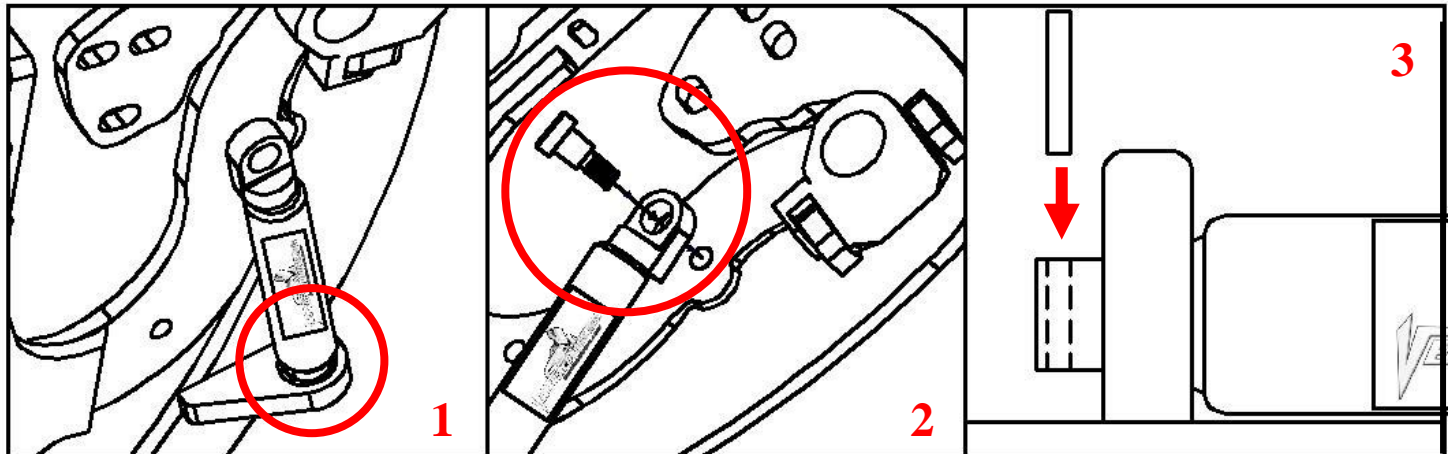
VERTICAL DOORS, INC.
VerticalDoors.com

8) Once hinge is locked in place, break nut #1 then turn Allen set screw #2 on fig until it hits the block then open the door and continue to adjust until the door matches with the striker, open and close door making sure it closes like factory.



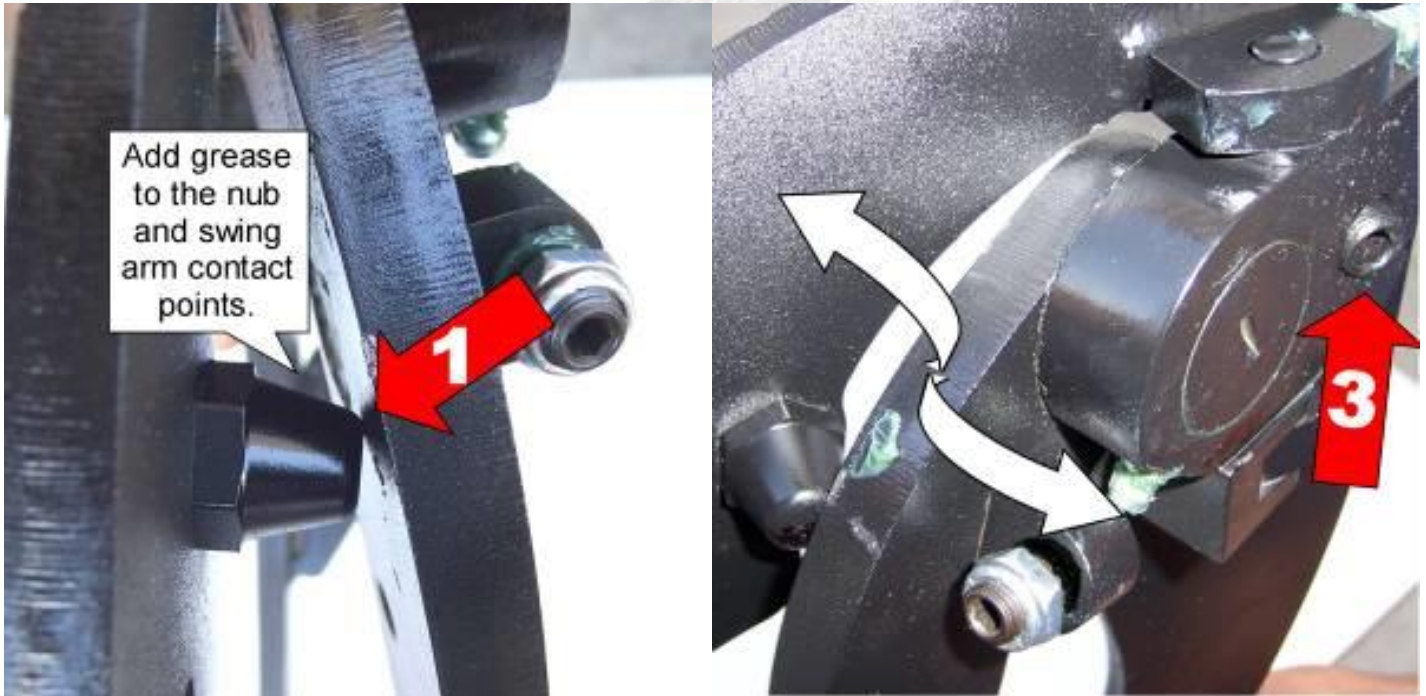
Hint(leave #1 nut loose until shock is installed Allen set screw will have to be re-adjusted after shock is installed.*

9) Install the shock.

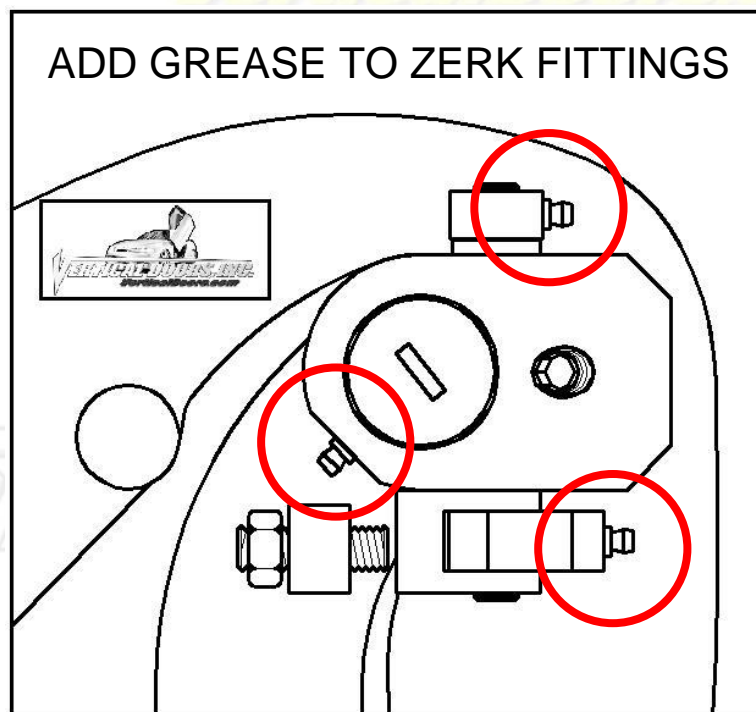


Hint (You will need a helper to raise the door). (Slip the spherical rod mount into the spherical ball bearing (1). Using a 1/4 Allen wrench, tighten the screw into the swing arm (2). After the shock is installed secure it by installing the pin in the bottom shock end (3).*

10) Adjust door opening set screw #3 clockwise until distance between nub and swing arm is enough so that the swing arm moves up and down freely.



*Hint** (Fine tune the Allen Adjustment screw (#2) to realigned striker with door. After the door is align test door by opening and closing, lifting and lowering door several times.



Note: Do not install fender until the adjustment of the door is accurate, and the set screw is tightly secure. Also make sure everything is tight, adjustment is set and everything is Locktite.

11) Modify wire layout:

After gaining the extra wire slack, you will need to cut the factory wire boot in half and add aftermarket wire loom to protect the exposed wires. Your wires should look like the picture on the right.



12) Modify fender:

You will have to cut the inner lip of the fender, leave about a 1/8 thickness on the inside fender lip. Use a grinder to remove any sharp edges and black door trim to give it a finish look.

NOTE: The idea of cutting the fender is to give the VDI kit room to move freely.

13) Close the door and Replace the fender, by reversing step 3.

Hint(Make sure the electrical wires don't get pinched enough to damage wires)*

14) Follow the same steps for the other side.

Thank you for the purchase of the:
CADILLAC CTS
2003-2007

VERTICAL DOORS INC. SYSTEM

Simply Uplifting



NOTE:

Vertical Doors Inc. assumes no responsibility for any damages caused by improper installation